



5 Minutes... From Buccal Swab Sample to PCR-Ready DNA

- No Column**
- No Magnetic Beads**
- No Centrifugation Steps**
- One Buffer, Single Tube**

BuccalQuick™ Buccal Cell DNA Extraction kit

The kit is designed for extraction of PCR-ready genomic DNA from a buccal swab or brush by using a one-buffer, single-tube extraction method. This simplified extraction procedure dramatically reduces the extraction time and labor. The entire extraction process takes about 5 minutes and is fully automatable. DNA yield from a single swab is sufficient to perform more than 25 PCR reactions.

- High DNA recovery**
- Two simple steps**
- Easy to automate**

Product Information

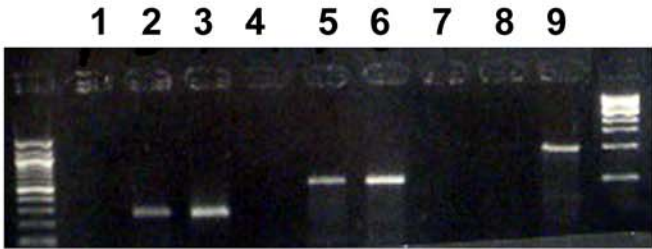
Catalog Number	Kit Size
BQ-50	50 extractions
BQ-100	100 extractions

For Research Use Only.
Not for use in diagnostic procedures.

1-888-825-6005
www.trimgen.com

Comparison of extraction methods

Genomic DNA is extracted from a buccal swab using the BuccalQuick™ kit and a kit from provider Q. 5µl of extracted DNA solution is used for PCR amplification of β-globin gene.



- Lane 1: Blank
- Lane 2: Provider Q kit. Amplicon size 268 bp
- Lane 3: BuccalQuick kit. Amplicon size 268 bp
- Lane 4: Blank
- Lane 5: Provider Q kit. Amplicon size 536 bp
- Lane 6: BuccalQuick kit. Amplicon size 536 bp
- Lane 7: Blank
- Lane 8: Provider Q kit. Amplicon size 989 bp **Failed**
- Lane 9: BuccalQuick kit. Amplicon size 989 bp **Succeeded**