

# EGFR

## Mutation Detection



ACTCGCTAGCTCGATCACAGATCAGTTGACC

with STA Core Reagents

### EGFR Exons 18 - 21

#### Point Mutations

E709A	G719S	G719A
S768I	T790M	L858R
L861Q		

#### Deletions and Insertions

70 Deletions in Codon 19  
45 Insertions in Codon 20

### TWO TUBE Test

#### STA Core Reagents

STA Core Reagents Kit A  
STA Core Reagents Kit C

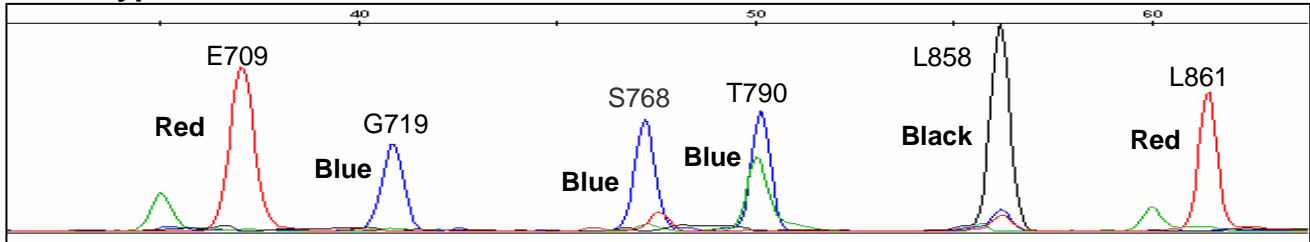
#### Assay Time

2.5 - 3 hours

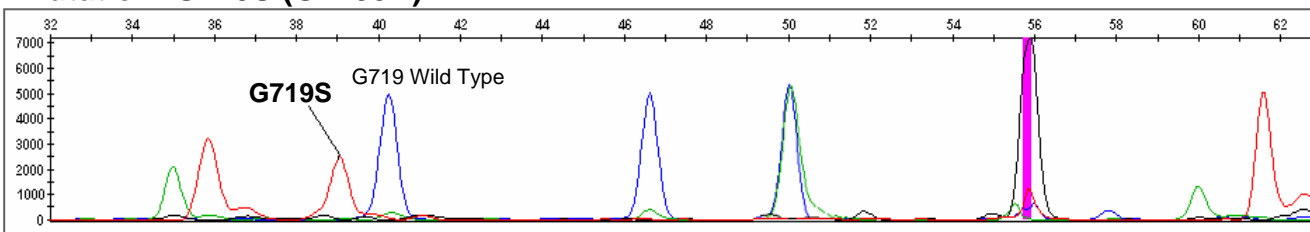


## Examples of EGFR Mutation Detection Data Collected by Fragment Analysis

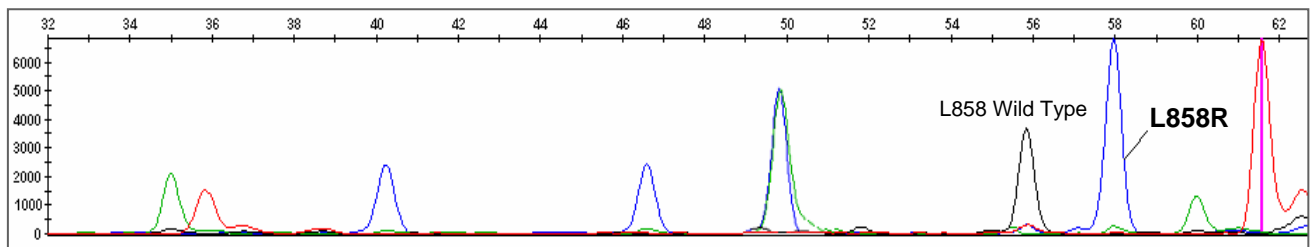
### Wild Type: No mutation



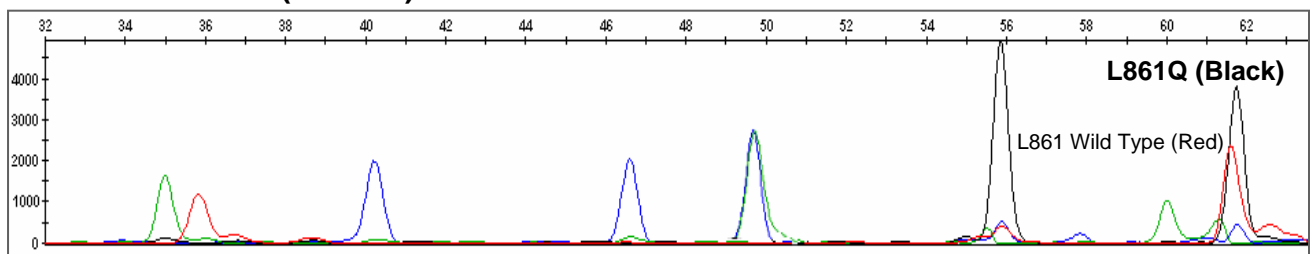
### Mutation: G719S (G2155A)



### Mutation: L858R (T2573G)



### Mutation: L861Q (T2582A)



## ORDERING INFORMATION

Product	Cat. No.	Size	Description
STA Core Reagents A	COR-A	32 assays	STA Reagents to enrich Point Mutations in EGFR gene
STA Core Reagents C	COR-C	32 assays	STA Reagents to enrich Ins and Dels in EGFR gene
Primer Set – EGA	GP07- 01	50 assays	PCR Primers, Detection Primers, Mutant Controls
Primer Set – EGC	GP07- 02	50 assays	PCR Primers, Detection Primers

\*For research use only, not for use in diagnostic procedures.

**888.825.6005**  
**www.trimgen.com**

34 LOVETON CIRCLE SUITE 210 SPARKS MD 21152 USA  
 PHONE: 410.472.1100 FAX: 410.472.1303